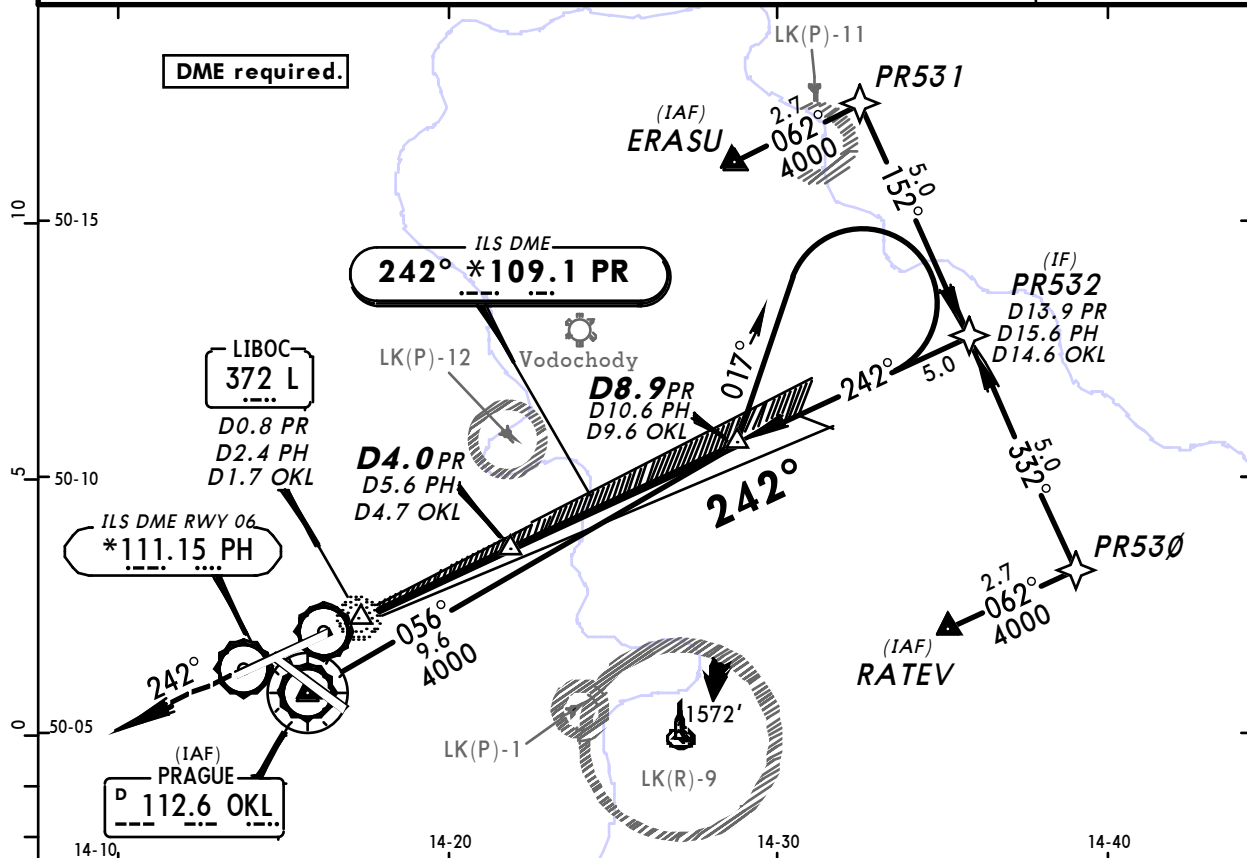
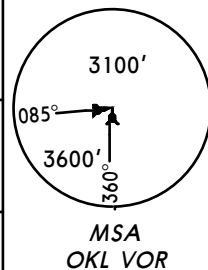


LKPR/PRG  
RUZYNE

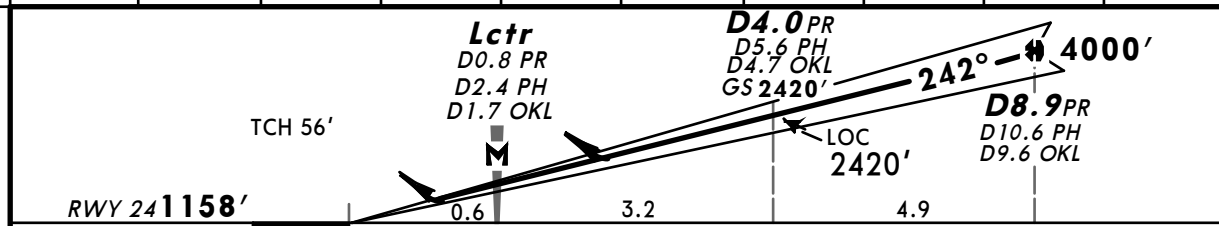
JEPPSEN  
20 APR 12 (11-3) Eff 3 May

PRAGUE, CZECH  
ILS Rwy 24

ATIS 122.15	PRAGUE Radar (APP) 120.52 127.57	*RUZYNE Radar (APP) 119.0	RUZYNE Tower 118.1	*Ground 121.9
LOC PR *109.1	Final Apch Crs 242°	GS D4.0 PR 2420' (1262')	ILS DA(H) 1358' (200')	Apt Elev 1247' RWY 1158'
<b>MISSED APCH:</b> Climb on 242° to 4000'. Radar vectoring will be provided. <b>MISSED APCH WITH COMM FAILURE:</b> Climb on 242° to 4000'. At D10.0 OKL turn RIGHT to VOR and climb to 5000'.				
Alt Set: hPa (MM on req) Rwy Elev: 42 hPa Trans level: By ATC Trans alt: 5000' Acft not equipped for P-RNAV expect radar vectoring after IAF RATEV and ERASU.				



LOC (GS out)	PR DME	1.0	2.0	3.0	4.0	5.0	6.0	7.0	8.0
	PH DME	2.6	3.6	4.6	5.6	6.6	7.6	8.6	9.6
	OKL DME	1.8	2.8	3.7	4.7	5.7	6.7	7.7	8.6
	ALTITUDE	1480'	1800'	2110'	2420'	2740'	3060'	3380'	3690'



Gnd speed-Kts	70	90	100	120	140	160	ALSF-II	4000'	on 242°
ILS GS or LOC Descent Angle	3.00°	377	484	538	646	753	REIL PAPI		
MAP at Lctr/D0.8 PR/D2.4 PH/D1.7 OKL									

STRAIGHT-IN LANDING RWY 24					CIRCLE-TO-LAND		
ILS DA(H) 1358' (200')			LOC (GS out) DA(H) 1450' (292')		Max Kts	MDA(H)	VIS
FULL	Limited	ALS out		ALS out	100	1650' (403')	1500m
A					135	1750' (503')	1600m
B	RVR 550m	RVR 750m	RVR 1200m	RVR 750m	180	1850' (603') ■	2400m
C					D	NOT AUTHORIZED	
D							

■ Not authorized East of apt between extended RCL 06/24 & 12/30.

CHANGES: RWY 13/31 redesignated 12/30.

© JEPPSEN, 2000, 2012. ALL RIGHTS RESERVED.